

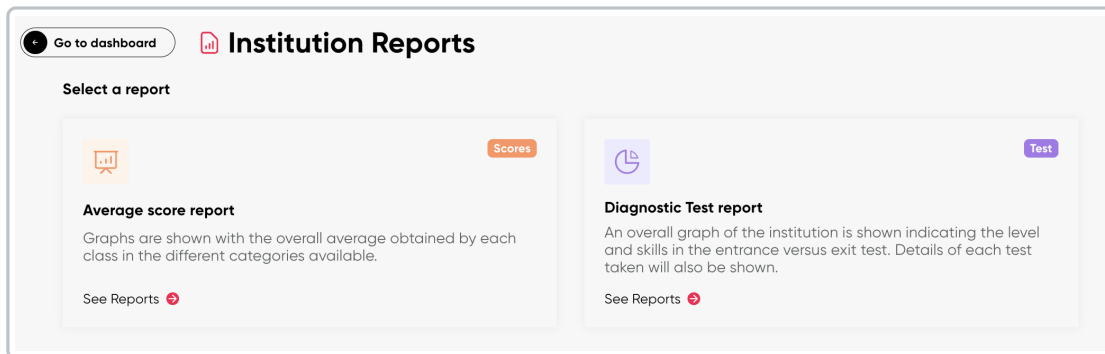
# Institution Reports

03/23/2026 7:39 pm EDT

[Leer artículo en español](#)



Institution Reports are tools for managing student progress at the institutional level. These reports are only available to Training Managers.



## Description of each report:



**Average score report:** Graphs are shown with the overall average obtained by each class in the different categories available.

The **<Institutional Averages Report>** focuses on the overall results of the different classes in three areas:

- Study Materials
- Assignments
- Tests
- And the combined average of all three.

It includes the option to filter the information by **<Grades (Preschool, Primary, Secondary, and Adult)>**, as well as a search option for specific date ranges.

At the top, four cards appear that clearly summarize student performance through the averages obtained:

- Students above assignments average
- Students below assignments average
- Students above tests average
- Students below tests average



This information makes it possible to identify how many students are above or below the institutional average in assignments and assessments.

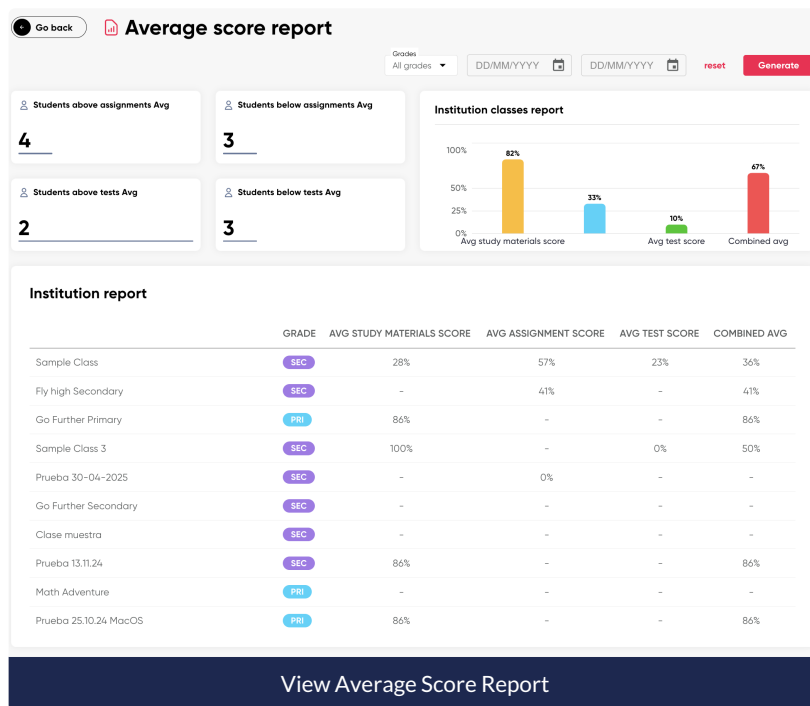
In the **<Institution Classes Report>** chart, comparative bars are shown with the overall averages:

- Average study materials score

- Average test score
- Combined average

In the <Institution Report> table, the performance by class is detailed:

- Class name
- Grade
- Average study materials score
- Average assignments score
- Average test score
- Combined average



**Diagnostic Test:** An overall graph of the institution is shown indicating the level and skills in the entrance versus exit test. Details of each test taken will also be shown.

The <Diagnostic Test> displays a complete report of diagnostic tests, including both the Entrance Test and the Exit Test.

It includes the option to filter the information by <Grades (Preschool, Primary, Secondary, and Adult)>, as well as a search option for specific date ranges.

This report can be downloaded in PDF or CSV format.

At the top, four cards appear showing the number of students who completed the entrance and exit evaluations of the Diagnostic Test. A summary of the CEFR level obtained and the average score in both evaluations (entrance/exit) is also included.

The first charts indicate the distribution of the CEFR level obtained for both entrance and exit. Meanwhile, the bar charts show the average scores obtained for each of the skills assessed (grammar / reading / listening / vocabulary).

In the <Institution Diagnostic Test Report> table, the performance by class is detailed:

- Class name
- Test type(entry / exit)
- Grade
- Creation date / Due date
- Status (number of students who have completed the evaluation)
- Class average score

