

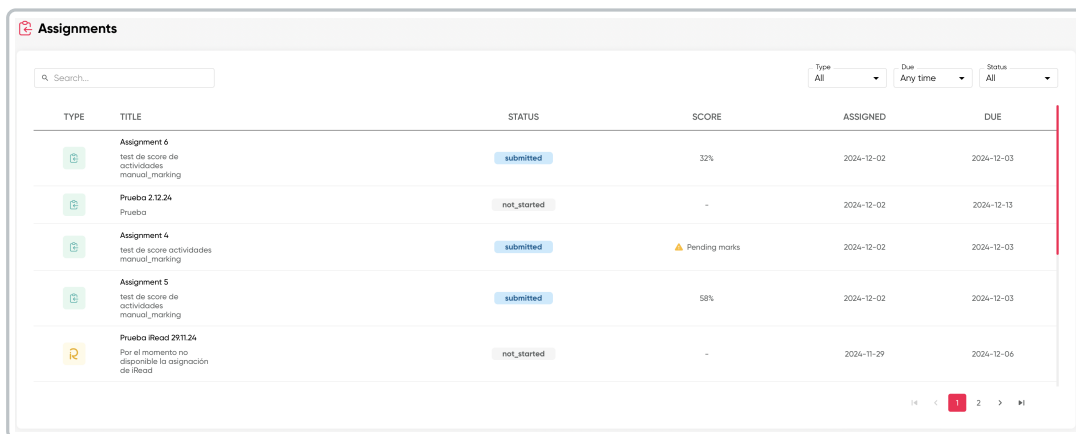
Assignments

05/14/2026 5:26 pm EDT

[Leer artículo en español](#)



This section displays the activities and assignments given by teachers, as well as the assessments.



The screenshot shows a table titled "Assignments" with a search bar and filters for Type, Due, and Status. The table contains the following data:

TYPE	TITLE	STATUS	SCORE	ASSIGNED	DUE
Assignment 6	test de score de actividades manual_marking	submitted	32%	2024-12-02	2024-12-03
Prueba 2.12.24	Prueba	not_started	-	2024-12-02	2024-12-13
Assignment 4	test de score actividades manual_marking	submitted	⚠ Pending marks	2024-12-02	2024-12-03
Assignment 5	test de score de actividades manual_marking	submitted	58%	2024-12-02	2024-12-03
Prueba IRead 29.11.24	Por el momento no disponible la asignación de IRead	not_started	-	2024-11-29	2024-12-06

The information displayed in this section includes:

- **Type of assignment**
 - Class
 - iRead
 - Test
- **Activity status**
 - Active
 - Not started
 - Closed
- **Score** (shown as a percentage and indicates if there are pending marks)
- **Assignment date**
- **Due date**

A search bar and filters for Assignment Type, Status, and Due Date are available for more efficient locating of assignments.

Type filter

Status filter

Due date filter

Type filter	Status filter	Due date filter
Type All Types ▼ All Types Assignment iRead Test	Status All ▼ All Active Closed	Due Due ▼ Due today Due this week Due this month

- Click on the activity to view the detailed progress.

Assignment 6 ✕

test de score de actividades manual_marking

Start date: 02/12/2024 Due date: 03/12/2024

CONTENT	PROGRESS	SCORE
📄 – Writing – Page 16, activity 2b Fly high Primary 3 eWorkbook	2/2	32%
📄 – Writing – Page 17, activity 3 & 4 Fly high Primary 3 eWorkbook		45%

Feedback

try again!

Cancel Save

- Click on the content to open the activity. Remember to click <Save> on activities that require it.

Fly High Primary 3 eWorkbook

– Writing – Page 17, activity 3 & 4

Writing

Reflect

4 Read and choose.

		Yes No
1. My text describes the routine of a friend or family member.	<input type="radio"/>	<input checked="" type="radio"/>
2. I mention different times of day.	<input type="radio"/>	<input checked="" type="radio"/>
3. I use prepositions of time correctly.	<input type="radio"/>	<input checked="" type="radio"/>

1 2

Clear Submit



If you're using an iPad or iPhone: In Studio, if you want to go back to the previous screen, swipe right.

- Click on **Submit**.



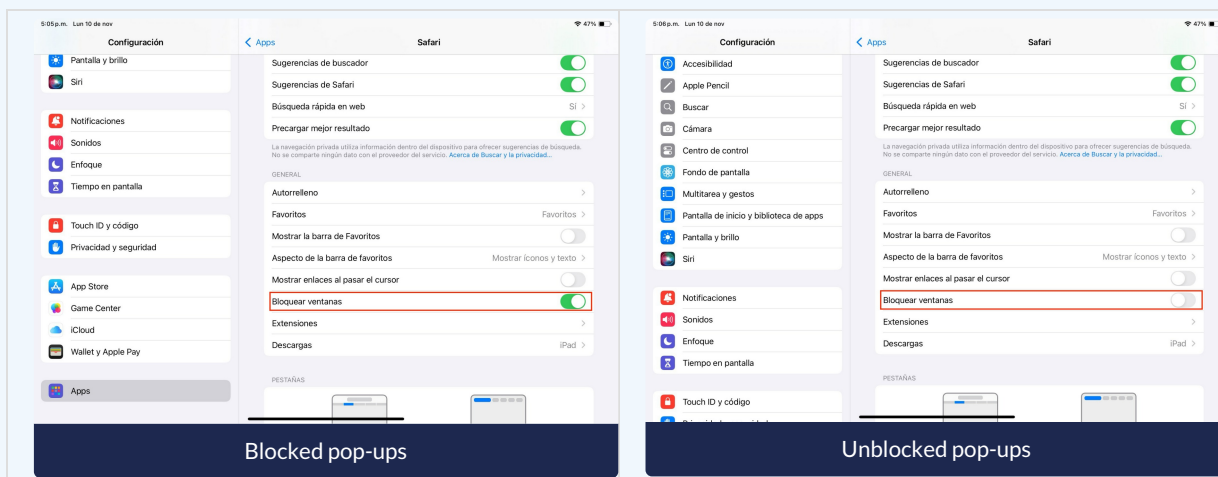
Remember: When you submit an assignment, your initial score is recorded in the Markbook; you can continue working on the assignment (even after reviewing your answers).



If you're working on your activities using an iPad or iPhone, please note the following information:

- To access eBook content, you need to disable the <Block Pop-ups> option on your device:
 1. Go to <Settings>
 2. Navigate to <Apps -> Safari -> General>
 3. Turn off the <Block Pop-ups> option.

Important: This option is currently not available on iPhone.



Remember:

In your course, activities have a due date. If the time runs out and you didn't click "Submit," don't worry — the platform automatically submits your answers for you. That's what we call <Autosubmit>.

How does it work?

When you have an assigned activity:

- There is a deadline indicating how much time you have to complete/submit it.
- If time runs out and you didn't click "Submit," the platform will automatically send the information for the activities you worked on.

Why is it useful?

- It prevents you from losing the progress you made.
- It ensures the teacher receives your answers, even if you didn't submit them manually.

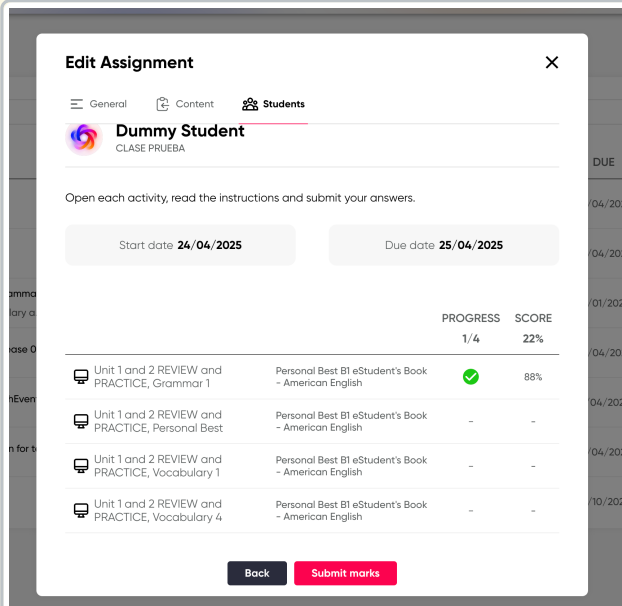
Example:

You have 4 assigned activities. You complete only 1 and score 88% on it.

You don't complete the remaining 3.

The platform will show a dash (-) in the score of those activities, which counts as zero (0).

Your final average will be 22%, because: $88 + 0 + 0 + 0 = 88$; $88 \div 4 = 22\%$.



Edit Assignment

General Content Students

Dummy Student
CLASE PRUEBA

Open each activity, read the instructions and submit your answers.

Start date **24/04/2025** Due date **25/04/2025**

		PROGRESS	SCORE
		1/4	22%
Unit 1 and 2 REVIEW and PRACTICE, Grammar 1	Personal Best B1 eStudent's Book - American English	✓	88%
Unit 1 and 2 REVIEW and PRACTICE, Personal Best	Personal Best B1 eStudent's Book - American English	-	-
Unit 1 and 2 REVIEW and PRACTICE, Vocabulary 1	Personal Best B1 eStudent's Book - American English	-	-
Unit 1 and 2 REVIEW and PRACTICE, Vocabulary 4	Personal Best B1 eStudent's Book - American English	-	-

Back Submit marks

Important:

- Only what you managed to answer will be submitted.
- No changes can be made after autosubmit.
- If the internet connection is lost while performing the activity, the auto-submit feature will send the responses completed up to the point of disconnection.



Use the pagination bar it allows you to navigate through different pages by clicking on the page numbers or the Next and Previous buttons.

